



SURVEY REPORT TN031B

Contents:

1. Summary
2. Trees over 2.5m DBH
3. Table of waypoints information
4. Map of waypoints and tracks
5. Appendices

Summary

Three volunteer survey teams of three people each conducted transects 50 - 100m apart through the proposed logging coupe TN031B on the 22nd of April 2023. The volunteers were representatives of Grassroots Action Network Tasmania and The Wilderness Society Tasmania.

Trees were measured at 1.3m above the midpoint of ground. Volunteers also surveyed for other high conservation values, such as significant karst features, hollow bearing trees, and threatened flora and fauna.

Trees over 2.5m DBH

Surveyors measured trees over 2.5DBH and recorded their location and measurements. We are submitting the data to assist with the compliance of Sustainable Timber Tasmania's internal policy to *retain trees of 2.5m DBH where operationally possible*. Trees over 2.5DBH should receive a protective buffer.

For instance, there is a buffer marked with blue tape around the tree at waypoint *TREE marked on Map* in TN031B. This particular tree is also marked on the FPP for TN031B¹ as a large tree. We welcome large trees being retained and hope that the additional 21 trees that measured over 2.5 DBH in TN031B will also be retained and marked on the FPP map.

¹ Appendix 1



Table of Waypoints Information

Over 2.5DBH - 24 trees (3 not in coupe, but within 50m of boundary)

GIANT - 1 tree (20m from coupe boundary)

	WAYPOINT NAME	WHAT IS WAYPOINT?	TREE CIRCUMFERENCE, DBH and HEIGHT	LOCATION	Photo
1	O2STS31	Tree over 2.5m DBH, Stag	11.51m, 3.59m DBH	S42° 46.465' E146° 37.381'	Appendix 2
2	O3BTS31	Tree over 2.5m DBH	14.45m, 4.60m DBH, 51.3m	S42° 46.478' E146° 37.352'	Appendix 3
3	O4BTS31	Tree over 2.5m DBH	11.30m, 3.59 DBH	S42° 46.504' E146° 37.374'	Appendix 4
4	O5BTS31	Tree over 2.5m DBH	11.72m, 3.73 DBH	S42° 46.444' E146° 37.313'	Appendix 5
5	O7BT	Tree over 2.5m DBH - Not in coupe	10.48m, 3.33 DBH	S42° 46.645' E146° 37.185'	Appendix 6
6	BIG	Giant Tree - 20m from coupe boundary	19.07m, 6.07 DBH, 60m	S42° 46.413' E146° 37.314'	Appendix 7
7	TN01	Tree over 2.5m DBH	11.9m, 3.78 DBH	S42° 46.478' E146° 37.525'	No photo
8	TN02	Tree over 2.5m DBH	13.4m, 4.26 DBH	S42° 46.483' E146° 37.535'	No photo
9	TN03	Tree over 2.5m DBH	7.9m, 2.51 DBH	S42° 46.484' E146° 37.536'	No photo



11	TN05	Tree over 2.5m DBH	13m, 4.14 DBH	S42° 46.489' E146° 37.359'	No photo
12	TN06	Tree over 2.5m DBH	8.8m, 2.80 DBH	S42° 46.414' E146° 37.610'	No photo
13	TN07	Tree over 2.5m DBH	9.35m, 2.97 DBH	S42° 46.398' E146° 37.613'	No photo
14	TREE marked on Map	Tree over 2.5m DBH (has buffer and is marked on FPP)	11.55m, 3.67 DBH	S42° 46.292' E146° 37.490'	No photo
15	870	Tree over 2.5m DBH	7.96m, 2.53 DBH	S42° 46.277' E146° 37.498'	Appendix 8
16	871	Tree over 2.5m DBH	9.24m, 2.94 DBH	S42° 46.300' E146° 37.489'	Appendix 9
17	873	Tree over 2.5m DBH	7.87m, 2.50 DBH	S42° 46.311' E146° 37.505'	Appendix 10
18	874	Tree over 2.5m DBH	8.27m, 2.63 DBH	S42° 46.317' E146° 37.515'	Appendix 11
19	875	Tree over 2.5m DBH	8.87m, 2.82 DBH	S42° 46.318' E146° 37.522'	Appendix 12
20	876	Tree over 2.5m DBH	8.6m, 2.73 DBH	S42° 46.396' E146° 37.618'	Appendix 13
21	877	Tree over 2.5m DBH	11.54m, 3.67 DBH	S42° 46.325' E146° 37.465'	Appendix 14

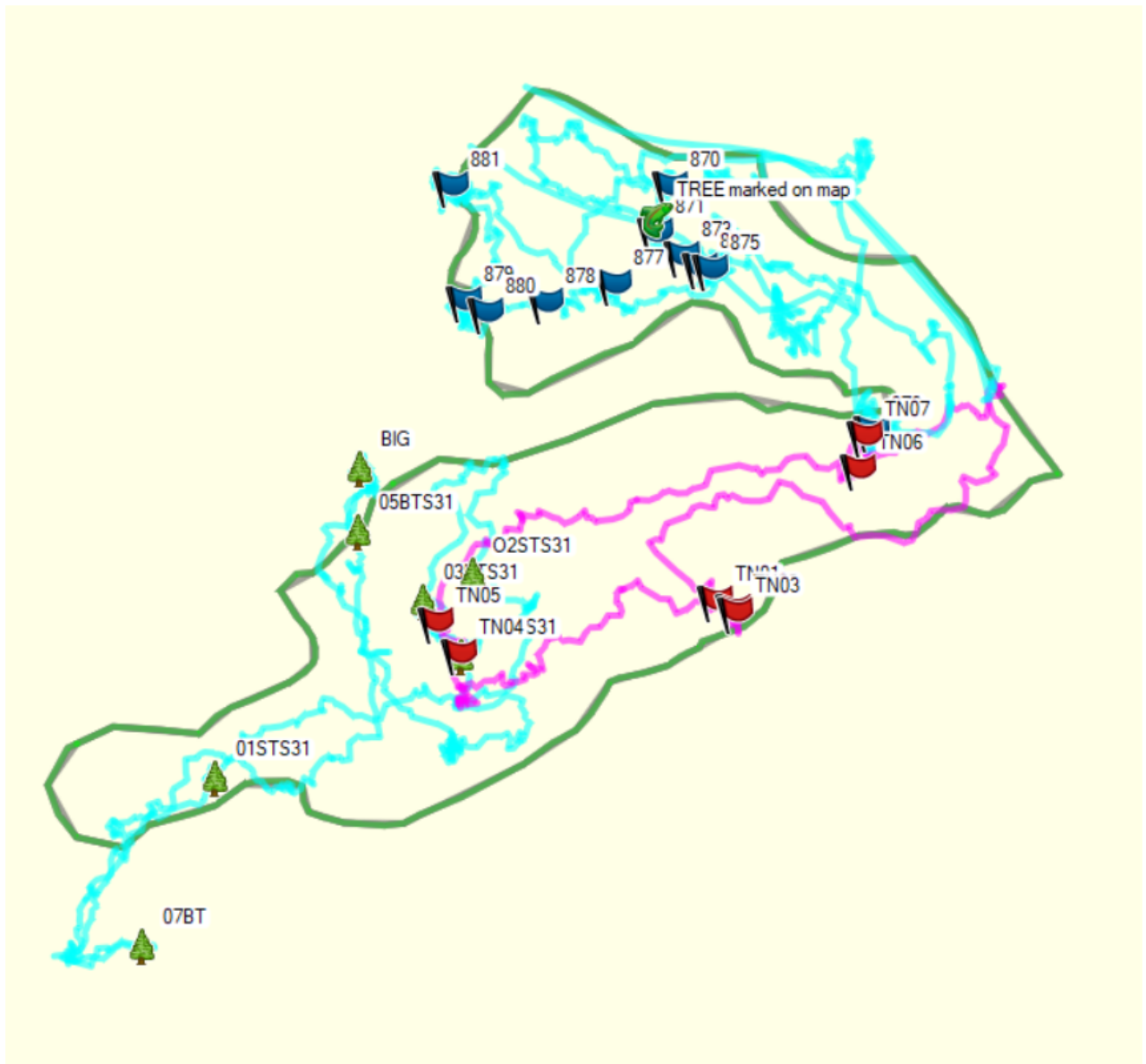


22	878	Tree over 2.5m DBH	10.9m, 3.47 DBH	S42° 46.334' E146° 37.424'	Appendix 15
23	879	Tree over 2.5m DBH - Not in coupe	11.3m, 3.59 DBH	S42° 46.333' E146° 37.375'	Appendix 16
24	880	Tree over 2.5m DBH	15m, 4.77 DBH	S42° 46.338' E146° 37.388'	Appendix 17
25	881	Tree over 2.5m DBH - Not in coupe	12.6m, 4.01 DBH	S42° 46.277' E146° 37.368'	Appendix 18



Map:

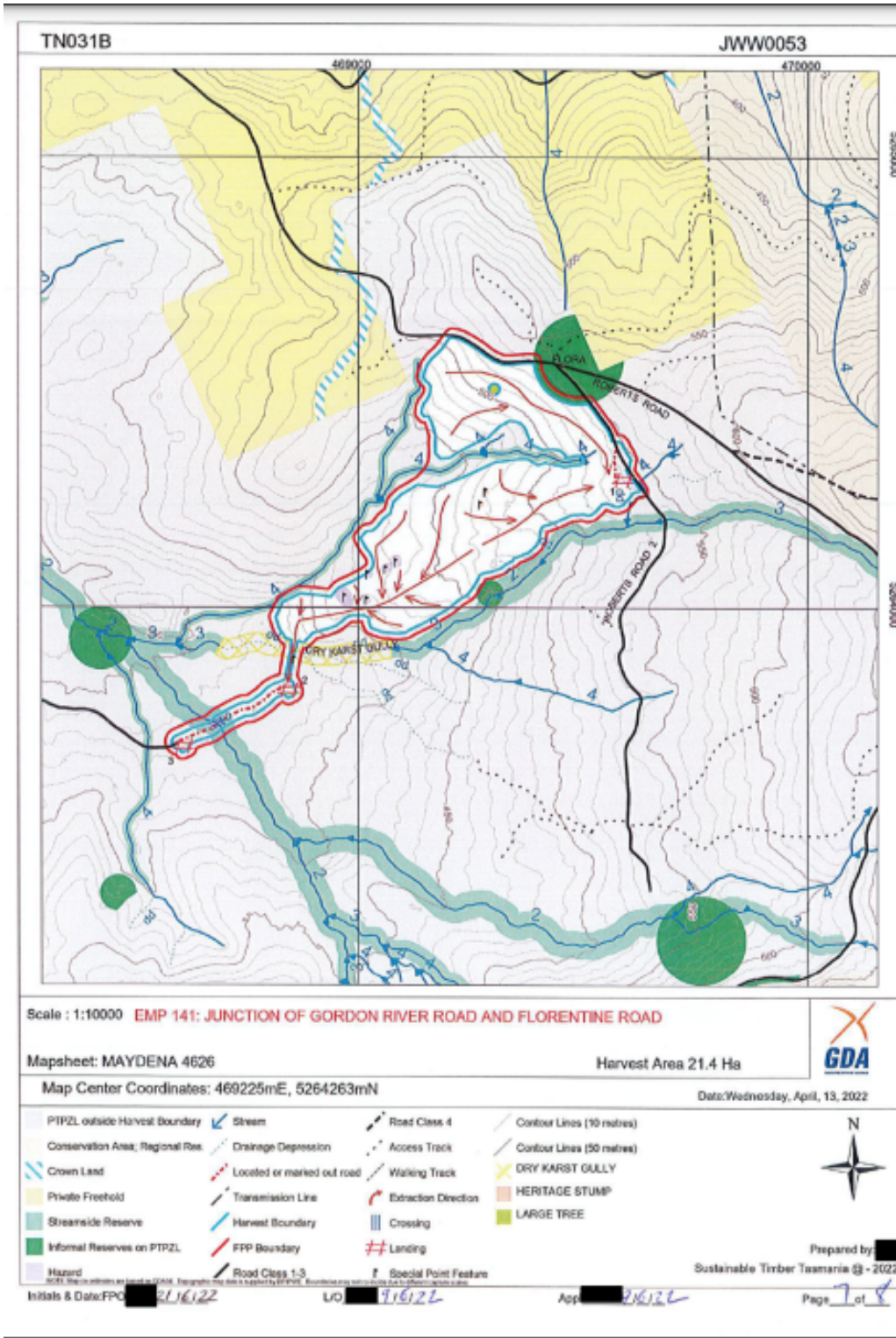
Waypoints in TN031B and tracks from the 22nd of April survey. Please refer to the GPX data sent through with this report.





Appendices:

Appendix 1: TN031B FPP



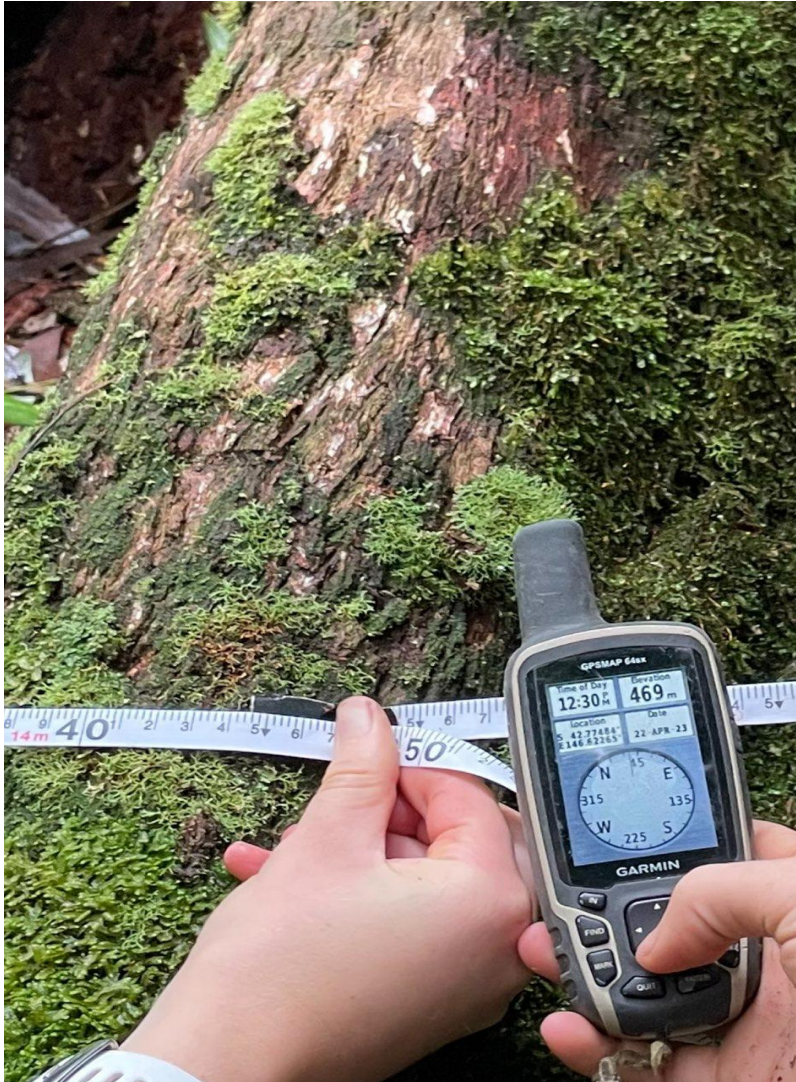


Appendix 2: Waypoint 02STS31





Appendix 3: Waypoint 03BTS31





Appendix 4: Waypoint 04BTS31





Appendix 5: Waypoint 05BTS31





Appendix 6: Waypoint 07BT





Appendix 7: BIG Waypoint





Appendix 8: Waypoint 870



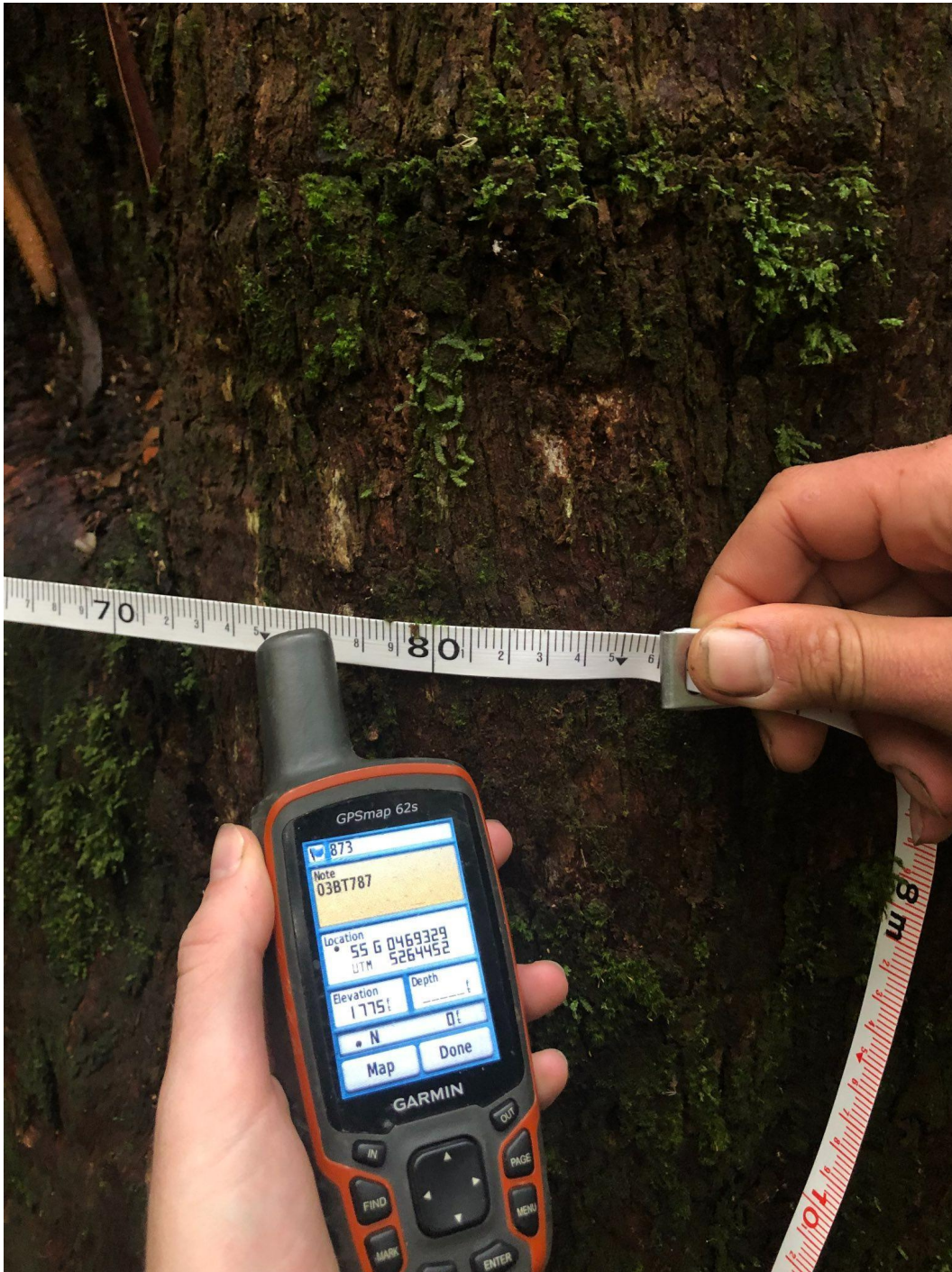


Appendix 9: Waypoint 871





Appendix 10: Waypoint 873





Appendix 11: Waypoint 874





Appendix 12: Waypoint 875





Appendix 13: Waypoint 876





Appendix 14: Waypoint 877



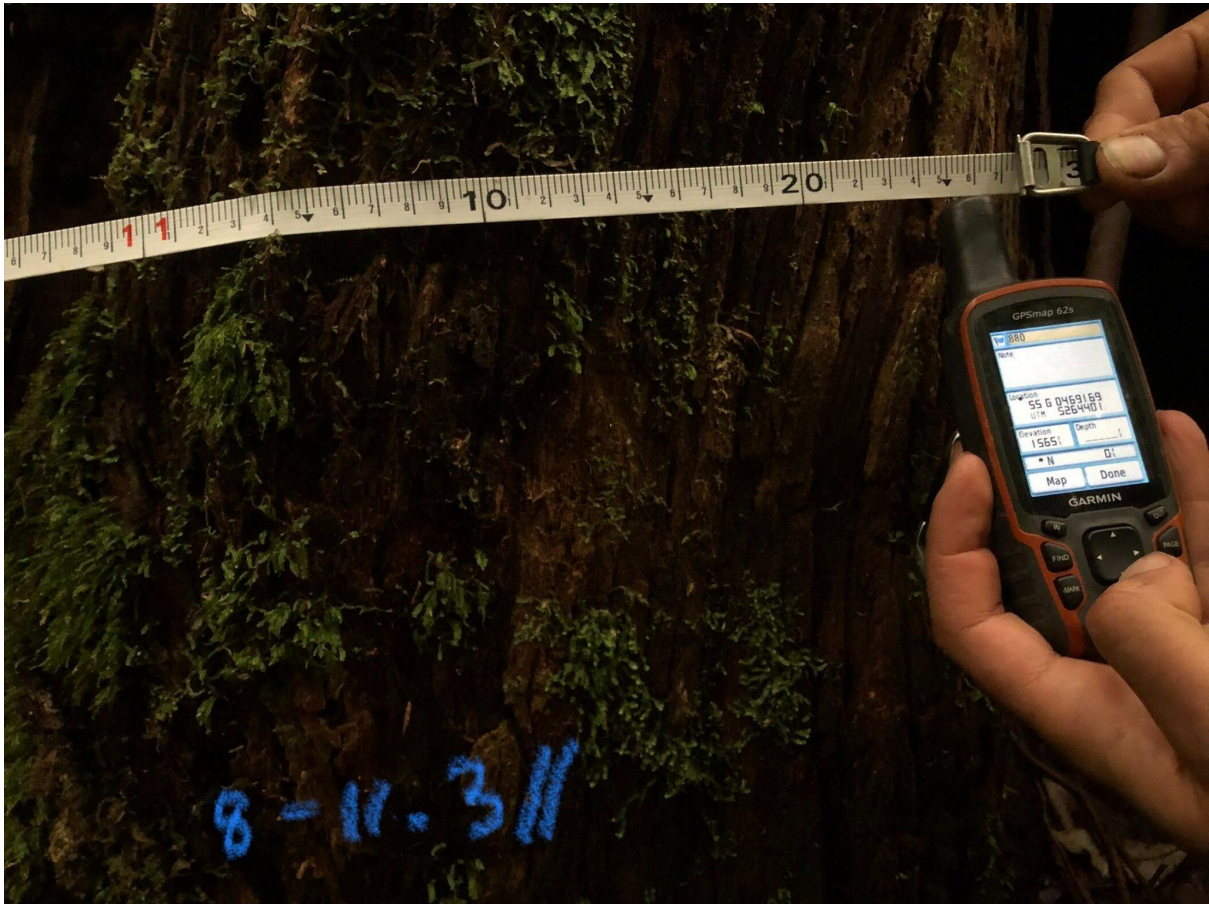


Appendix 15: Waypoint 878





Appendix 16: Waypoint 879





Appendix 17: Waypoint 880





Appendix 18: Waypoint 881

